



**KENYA FORESTRY RESEARCH INSTITUTE
KITUI REGIONAL RESEARCH CENTRE**

REPORT ON *MORINGA OLEIFERA* SEED STANDS IN KITUI



By: Samuel Auka

May 2011

KEFRI Kitui

The National Tree Seed Centre at Muguga is mandated to collect, test, store and distribute high quality germplasm for the benefit of all stakeholders in the country and beyond. Tree seed production sources and sites remain important function towards the achievement of the above objective of NTSC.

Two seed stands were established in Kitui at the end of 2010 as shown on table 1 below.

Title/plot	Species	Area (ha)	No. of seedlings	Remarks
Seed stand	<i>Moringa oleifera</i>	1.0	585	4m x4m espacement

Table 1: Moringa Seed stand establishment at Tiva- Kitui 2010

1. *Moringa oleifera* seed stand

The site identified for the activity is gently sloppy eastwards and consists of well drained sandy loam soil. The area is approximately 1 hectare.

Activities undertaken before and during stand establishment included bush clearing, tractor ploughing, staking and planting.

a). **Bush clearing**

Manual bush clearing was done to cut, uproot and remove debris from identified site. The activity began in mid October 2010, weeks before the start of rainy season.

b). **Ploughing**

Tractor disc plough was used in tilling to break the hard surface pan as well as to improve rainwater infiltration into the soil.

c). **Staking**

Manual staking at an espacement of 4 metres by 4 metres was done to mark the planting spots.

d). **Planting**

A total of 585 *Moringa oleifera* seedlings were planted on the one hectare site. The quantity planted comprised all available seedlings at the time.

Current status

The seed stand established very well with a survival rate of over 80% as at mid February 2011. However a serious wildlife invasion was observed in early March 2011 leading to total stand destruction. All the standing plants were systematically uprooted and their roots chewed by baboons.



Photo 1, 2 and 3: Staking and planting during stand establishment

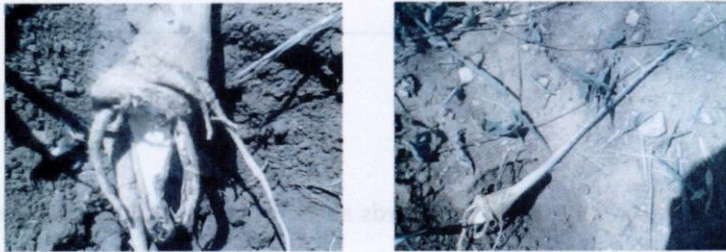


Photo 4 and 5: Destruction by baboon



Photo 6: A healthy *Moringa oleifera* plant before wildlife invasion

Recommendation

The seed stand performed poorly due to species palatability to wildlife. Any similar undertaking in future should consider intercropping *Moringa oleifera* with a 'dummy' crop to divert attention of wildlife.