



**KENYA FORESTRY RESEARCH INSTITUTE
KITUI REGIONAL RESEARCH CENTRE**

**PRODUCTION OF *MELIA VOLKENSII* SEEDLINGS IN
KITUI REGIONAL RESEARCH CENTRE 2010-2011 FINANCIAL YEAR**



By: Ezekiel m. Kyalo

June 2011

1.0 Introduction

Melia is an important species found in arid and semi arid areas. *Melia* belongs to the family of meliaceae. However, the species has been over-exploited for timber and very few stands are found in the wild. Planting of melia has been constrained by scarcity of good seeds and technical knowledge to raise enough seedlings. Even though *melia* planting is picking slowly within eastern regions of Kenya.

1.1 Seeds collection

During the Financial year of 2010-2011, below nuts and fruits of melia were collected for seedlings production and revenue collection.

Schedule of seeds collected

Quarter	Amount collected	Area collected	Remarks
Quarter one	1080 kgs(fruits)	Nuu	Seedlings production/revenue
Quarter two	147 kgs (nuts)	Mutomo	Revenue collection
Quarter three	600 kgs(fruits)	mutomo	Seedlings production
Quarter four	3450 kgs(fruits)	Voi/Mutomo	Seedlings production
Total	5277 kgs		



Plate: 1 de-pulping of *melia* fruits at Tiva nursery

1.2 Seedlings production

During the above financial year, the following seedlings were raised as shown in the below table.

Quarter	Kitui No. produced	Kibwezi No. produced	Remarks
Quarter one	5439	0	Research/revenue
Quarter two	3150	0	Research/revenue
Quarter three	4200	250	Research/revenue
Quarter four	9384	3500	Research/revenue
Totals	22173	4000	= 26173

There is need to allocate more resources for *melia* research and propagation trainings because there are many questions being asked by various stake holders on issues which have not been confirmed like Optimum altitude *melia* can be planted, soil type and many others.

It is important to have many demonstration/research plots where *melia* is compared with other important species across ecological zones.



Plate: 2 Pricked-out seedlings of melia



Plate: 3 Young melia seedlings

1.3 Major challenges

Over the reporting period there were several challenges which constrained mass production of melia seedlings;

- Out break of unknown disease which has killed a lot of seedlings in our nursery and other melia producing nurseries within Kitui and Kibwezi
- Frequent breakdown of our aging water generator which constrained little labour force in the nursery
- Production of *melia* seedlings is labour intensive yet our nursery has few people

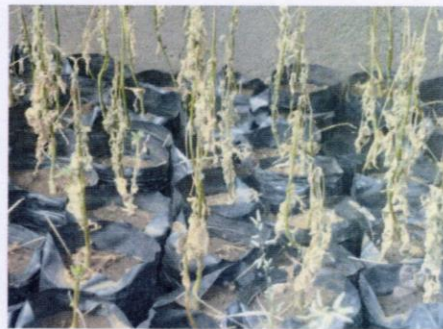


Plate: 4 Wilting seedlings of *melia volkensii* at Tiva nursery

1.4 Way forward

- Entomologist should investigate the nature of the disease attacking the seedlings
- There is need to replace the generator
- Casual labour should be increased